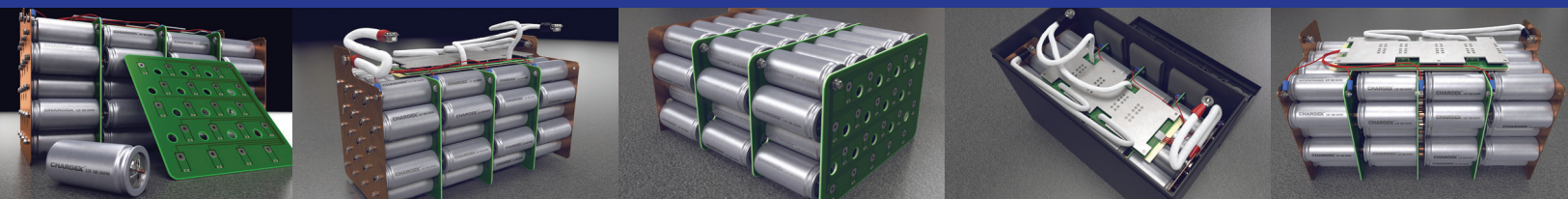


**TECHNICAL SPECIFICATIONS**



**12V 10A LITHIUM ION BATTERY CHARGER**



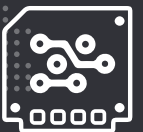
**SAFE**



**LiFePO<sub>4</sub>  
CHARGER**

**ALUMINUM CASE**

Light weight and rugged



**HIGH EFFICIENCY**

≥90% efficient, Eco-friendly



**MULTI-FUNCTION PROTECTION**

Over voltage, over current, over temperature, short circuit, reverse polarity



Model: **CXC1210**

<b>12V 10A</b> Lithium Ion Battery Charger (LiFePO4)	<b>ALUMINUM</b>	<b>CC / CV / FLOAT</b>	<b>LIFEPO4</b>
--	-----------------	------------------------	----------------

**COMMERCIAL | MARINE | RV | GOLF | AUTOMOTIVE | UPS | OFF-GRID**

The CHARGEEX® CXC1210 - 12V 10A Lithium Ion Battery Charger features the latest and most advanced Lithium Iron Phosphate - LiFePO4 Battery Charging Technology and is designed for CHARGEEX® Lithium Ion Batteries. The CXC1210 is engineered with 2 or 3 stage charging modes CC, CV, Floating, silent cooling fans and state of the art heat dissipation.

CHARGE VOLTAGE	
LiFePO4 (Constant Current)	14.6V
Li-ion (Constant Voltage)	16.8V
Lead Acid (Constant Voltage)	14.7V
Float Voltage	13.6V
Watts	240W
Input Voltage	110-230Vac
Max Charge Current	10A

TECHNOLOGY	
Case	Aluminum (Black or Silver)
Efficiency	≥90%
Charging Modes	CC / CV / Float
Cooling	Fan cooled (silent)
LED Indicators	Red (Power on / Charging) Green (Full Charge)
Input Connector Option	US, EU, CN, IT, UK, ZA, AU
Output Connector options	Ring, Alligator, IEC, XLR, Anderson, 2.1/2.5DC, RCA, XT60,

DIMENSIONS   WEIGHT	
Weight	2.21 Lbs / 1kg
Length	6.7" / 170mm
Width	3.54" / 90mm
Height	1.97" / 50mm

SAFETY   PROTECTION	
Over Voltage	Yes
Over Current	Yes
Over Temperature	Yes
Automatic Short Circuit	Instant
Reverse Polarity	Instant
Flame Retardant	Yes

